

Possible Spotted Lanternfly Immature Look-alikes in Virginia

Theresa Dellinger and Eric Day, Department of Entomology, Virginia Tech

Immature spotted lanternfly, *Lycorma delicatula* (White), are black with white spots when young. They turn red and black with white spots when older. A few other insects in Virginia have similar color patterns, but a close look will show that immature spotted lanternflies are easily recognizable. Sizes not to scale.



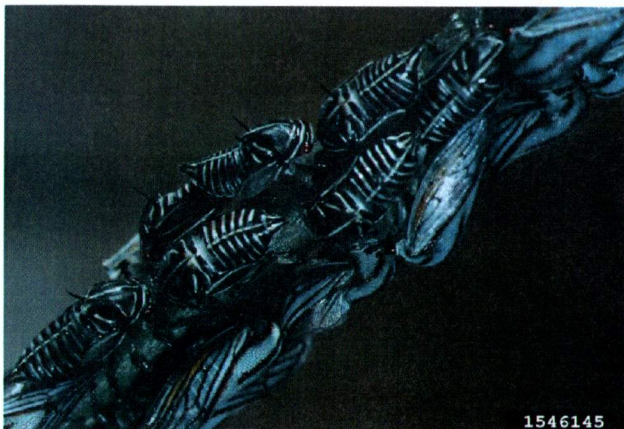
Young spotted lanternfly nymph. Berks Co. Conversation Dist.



Older spotted lanternfly nymphs. Eric Day



Wheel bug nymph. Bugwood.org



Oak treehopper nymphs. Bugwood.org



Assassin bug nymph. Bugwood.org