

PRINCE WILLIAM COUNTY 2008 Comprehensive Plan Thoroughfare Plan Map

Published April 20, 2016

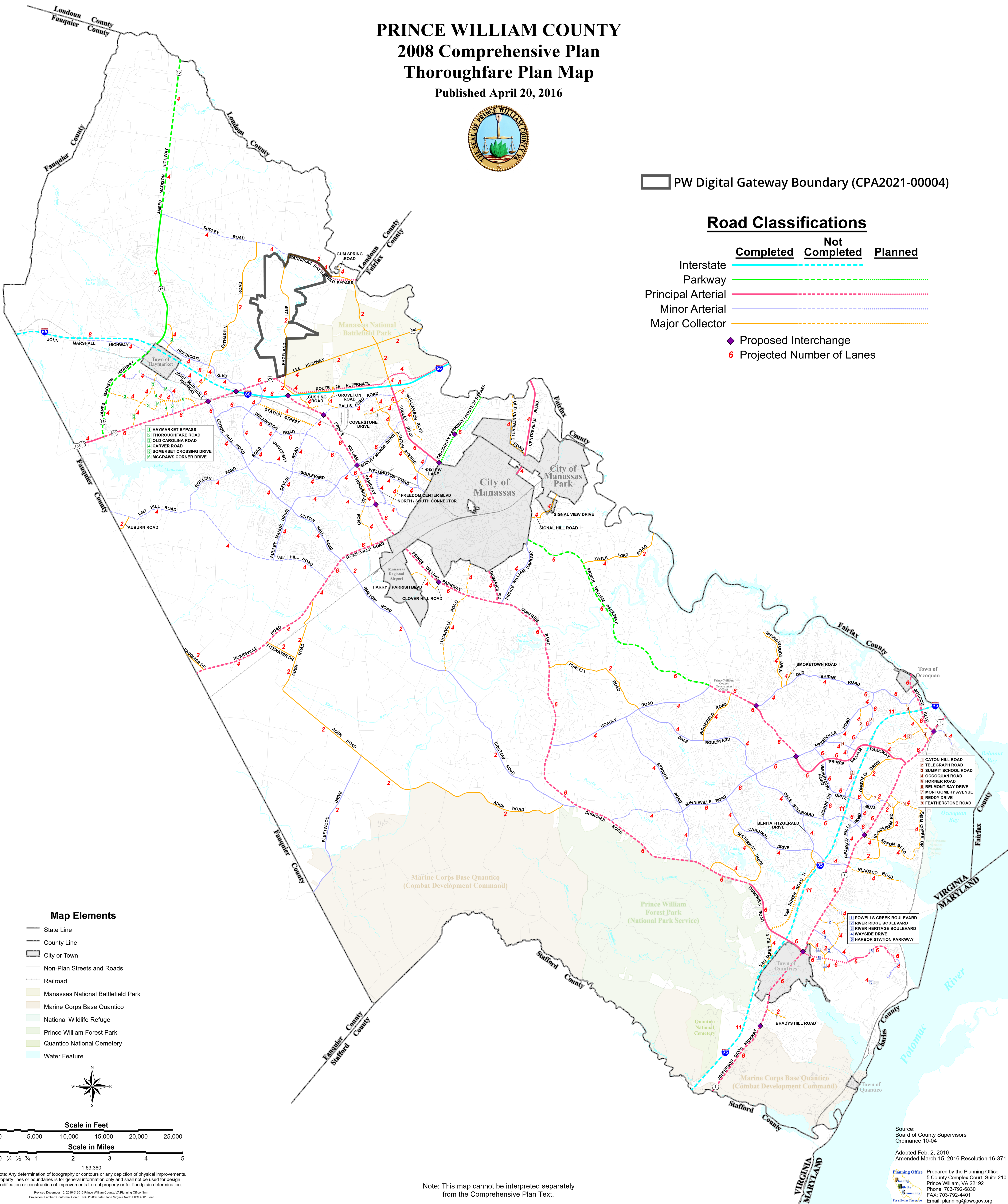


PW Digital Gateway Boundary (CPA2021-00004)

Road Classifications

	Completed	Not Completed	Planned
Interstate			
Parkway			
Principal Arterial			
Minor Arterial			
Major Collector			

Proposed Interchange
 Projected Number of Lanes



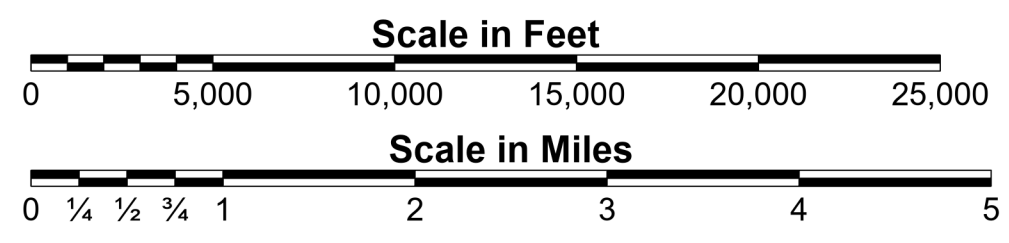
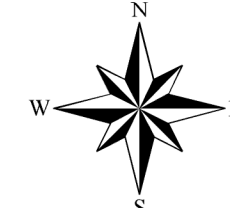
- 1 HAYMARKET BYPASS
- 2 THROUGHFARE ROAD
- 3 OLD CAROLINA ROAD
- 4 CARVER ROAD
- 5 SOMERSET CROSSING DRIVE
- 6 MCGRAW'S CORNER DRIVE

- 1 CATON HILL ROAD
- 2 TELEGRAPH ROAD
- 3 SUMMIT SCHOOL ROAD
- 4 OCCOQUAN ROAD
- 5 HORNER ROAD
- 6 BELMONT BAY DRIVE
- 7 MONTGOMERY AVENUE
- 8 REDDY DRIVE
- 9 FEATHERSTONE ROAD

- 1 POWELLS CREEK BOULEVARD
- 2 RIVER RIDGE BOULEVARD
- 3 RIVER HERITAGE BOULEVARD
- 4 WAYSIDE DRIVE
- 5 HARBOR STATION PARKWAY

Map Elements

- State Line
- County Line
- City or Town
- Non-Plan Streets and Roads
- Railroad
- Manassas National Battlefield Park
- Marine Corps Base Quantico
- National Wildlife Refuge
- Prince William Forest Park
- Quantico National Cemetery
- Water Feature



Note: Any determination of topography or contours or any depiction of physical improvements, property lines or boundaries is for general information only and shall not be used for design modification or construction of improvements to real property or for floodplain determination.

Note: This map cannot be interpreted separately from the Comprehensive Plan Text.

Source: Board of County Supervisors Ordinance 10-04
 Adopted Feb. 2, 2010
 Amended March 15, 2016 Resolution 16-371

Prepared by the Planning Office
 5 County Complex Court, Suite 210
 Prince William, VA 22192
 Phone: 703-792-6530
 FAX: 703-792-4401
 Email: planning@pwco.org